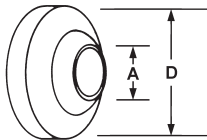
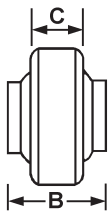
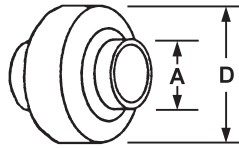


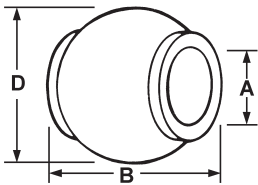
BALL SOCKETS

BALL SOCKETS - Socket pressure-formed of seamless tubing. **Use Low-Hydrogen Type 616 or Ni-Rod Nickel Welding Rod.**
 *Starred Sockets have shoulders machined on side of ball.



Speeco Plated Part Number	A Pin Hole Diam. Inches	B Length Thru Bore Inches	C Greatest Sleeve Width Inches	D Sleeve Overall Diam. Inches	Price Per Piece	Danhusier Unplated Part Number	A Pin Hole Diam. Inches	B Length Thru Bore Inches	C Greatest Sleeve Width Inches	D Sleeve Overall Diam. Inches	Price Per Piece	Pkg. Qty.
5/8" Lift Arm Ball Sockets - Category 0												
B2225	5/8	1	3/4	2	\$7.59	5870	5/8	1	3/8	2	\$6.11	4
7/8" Lift Arm Ball Sockets - Category 1												
---	7/8	--	--	2-1/4	5088	7/8	1-3/8	9/16	2-1/4	9.40	4
B223	7/8	1-3/8	7/8	2-3/8	12.08	---	7/8	--	--	2-3/8	4
---	7/8	--	--	2-1/2	5827	7/8	1-3/8	3/8	2-1/2	12.11	4
1-1/8" Lift Arm Ball Sockets - Category 2												
B224 Reg.	1-1/8	1-5/16	7/8	2-3/8	13.11	---	1-1/8	--	--	2-3/8	4
B2216 Hvy.	1-1/8	1-3/4	1-3/8	3-1/8	20.24	5859	1-1/8	1-3/8	3/8	3-1/8	17.08	4
---	1-1/8	--	--	3-1/8	5836	1-1/8	1-3/4	9/16	3-1/8	19.91	4
1-7/16" Lift Arm Ball Sockets - Category 0												
B2231	1-7/16	1-3/4	1-11/32	3-1/2	26.88	5865	1-7/16	1-3/4	1/2	3-1/2	33.77	4
5/8" Top Link Ball Sockets - Category 1												
B2225	5/8	1	3/4	2	7.59	5870	5/8	1	3/8	2	6.11	4
3/4" Top Link Ball Sockets - Category 1												
B216* Reg.	3/4	1-5/8	3/4	2	9.30	5868	3/4	1	3/8	2	6.11	4
---	3/4	--	--	2	5500	3/4	1-3/4	3/8	2	9.55	4
B215* Hvy.	3/4	1-5/8	7/8	2-1/8	10.42	---	3/4	--	--	2-1/8	4
---	3/4	--	--	2-1/4	5347	3/4	1-3/8	9/16	2-1/4	9.40	4
---	3/4	--	--	2-1/2	5860	3/4	1-3/8	3/8	2-1/2	12.11	4
1" Top Link Ball Sockets - Category 2												
---	1	--	--	2	7466	1	1	3/8	2	6.11	4
B214* Reg.	1	1-3/4	7/8	2-3/8	12.05	---	1	--	--	2-3/8	4
---	1	--	--	2-3/4	5526	1	1-3/4	7/8	2-3/4	15.13	4
---	1	--	--	3-1/8	5849	1	1-3/4	9/16	3-1/8	19.91	4
1-1/4" Top Link Ball Sockets - Category 3												
---	1-1/4	--	--	2-3/4	5924	1-1/4	1-3/4	7/8	2-3/4	15.09	4
B2229	1-1/4	1-3/4	1-9/32	3-1/8	20.24	5925	1-1/4	1-3/4	9/16	3-1/8	25.22	4
1-3/4" Top Link Ball Sockets - Extra Large												
---	1-3/4	--	--	4-1/2	5910	1-3/4	2-1/2	1	4-1/2	105.46	4

REPLACEMENT BALLS -



Speeco Part Number	Type	A Pin Diam. Inches	B Length Thru Bore Inches	D Sleeve Overall Diam. Inches	Price Per Piece	Pkg. Qty.	Speeco Part Number	Type	A Pin Diam. Inches	B Length Thru Bore Inches	D Sleeve Overall Diam. Inches	Price Per Piece	Pkg. Qty.
7/8" Lift Arm Ball - Category 1							3/4" Top Link Ball - Category 1						
B243	Ford	7/8	1-3/8	2-1/4	\$6.91	4	B241	Deere	3/4	1-3/4	2	\$7.05	4
1-1/8" Lift Arm Ball - Category 2							1" Top Link Ball - Category 2						
B246	Oliver	1-1/8	1-3/4	2	7.05	4	B242	Deere	1	1-3/4	2	7.05	4
B244	Ford	1-1/8	1-3/4	2-1/4	7.51	4							

SPEECO COMBINATION BALL SOCKETS - Di-Chrome Plated - Use Low Hydrogen, Type 616 or Ni-Rod Nickel Welding Rod.
 Keep one ball socket in stock for both pin hole sizes. Socket pressure formed of seamless tubing.



Plated Part No.	Replaces Unplated Part Number	Sleeve Overall Diam. Inches	Sleeve Width Inches	Length Thru Bore Inches	Price Per Piece	Pkg. Qty.	Plated Part No.	Unplated Part Number	Sleeve Overall Diam. Inches	Sleeve Width Inches	Length Thru Bore Inches	Price Per Piece	Pkg. Qty.
7/8" and 1-1/8" Pin Hole Diameter Lift Arm Ball Sockets - Category 1 or 2							3/4" and 1" Pin Hole Diameter Top Link Ball Sockets - Category 1 or 2						
B232	B231	2-3/4	1-3/16	1-3/4	\$20.48	4	B236	B235	2-3/8	7/8	1-1/2	\$14.31	4

ASK FOR QUANTITY DISCOUNT Prices subject to change without notice.

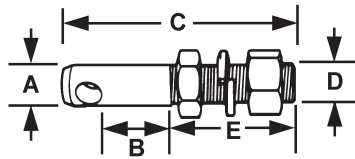
THREE POINT LINKAGE PARTS

ADJUSTABLE & FORGED DRAW PINS & BUSHINGS

C3

SPEECO ADJUSTABLE PLATED DRAW PINS

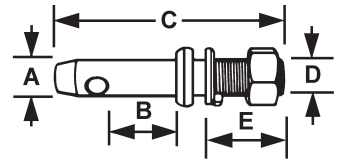
For 3-Point Hook-Up Tools
Shoulder adjusts to various
stabilizer arm spacings.
Cold rolled steel.
Di-chromate plated.



Part Number	A Pin Diam. Inches	B Useable Length Inches	C Length Overall Inches	D Thread Diam. Inches	E Useable Thread Length	Price Per Piece	Pkg. Qty.
Category 0 with Washer and 2 Nuts - Adjustable Regular Type							
P7220	5/8	1-5/16	3-7/8	5/8	2	\$2.88	4
Category 1 with Washer and 2 Nuts - Adjustable Regular Type							
P722	7/8	1-5/8	5	7/8	2-5/8	3.45	4
LA-1*	7/8 Long	1-3/4	5-1/4	7/8	--	7.77	4
Category 2 with Washer and 2 Nuts - Adjustable Regular Type							
P721	1-1/8	1-3/4	6-1/8	1-1/8	3-5/8	9.30	4
LA-2*	1-1/8 Long	1-15/16	6-1/4	1-1/8	--	14.06	4
Category 0 to 1 with Washer and 2 Nuts - Adjustable Reducing Type							
P7221	7/8	1-3/4	4-1/2	5/8	2	5.22	4
Category 1 to 2 with Washer and 2 Nuts - Adjustable Reducing Type							
P724	1-1/8	1-3/4	5-1/4	7/8	2-7/16	6.64	4
---	1-1/8 Long	--	--	7/8	--	4
---	1-1/8 Long	--	--	7/8	--	4
Category 2 to 3 with Washer and 2 Nuts - Adjustable Reducing Type							
P7211	1-7/16	2	6-1/2	1-1/8	3-3/8	18.06	4

* Miller

FORGED STEEL WITH SHOULDER



Part Number	A Pin Diam. Inches	B Useable Length Inches	C Length Overall Inches	D Thread Diam. Inches	E Useable Thread Length	Price Per Piece	Pkg. Qty.
Category 1 with Washer and 1 Nuts - Forged Steel Shoulder Type							
P728	7/8	1-3/4	5-1/2	7/8	1-5/8	3.07	4
P726	7/8 Long	1-3/4	5-3/4	7/8	1-1/8	12.00	4
Category 2 with Washer and 1 Nuts - Forged Steel Shoulder Type							
P7212	1-1/8	1-3/4	6-1/8	1-1/8	2-3/8	8.32	4
---	---	---	---	---	---	--
Category 0 to 1 with Washer and 1 Nuts - Forged Steel Reducing Type							
P7248	7/8	1-15/16	4-1/2	5/8	5/8	8.71	4
Category 1 to 2 with Washer and 1 Nuts - Forged Steel Reducing Type							
P7240	1-1/8	1-13/16	5-1/4	7/8	1-5/8	6.31	4
LA1-2*	1-1/8 Long	---	5-1/4	7/8	---	10.94	4
P7246	1-1/8 Long	2-1/4	6-5/16	7/8	2-1/4	9.93	4
Category 2 to 3 with Washer and 1 Nuts - Forged Steel Reducing Type							
---	---	---	---	---	---	--

* Miller

BUSHINGS -

Made of seamless cold rolled tubing.
Heat treated and di-chromate plated.



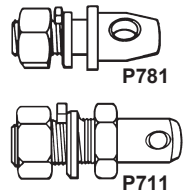
Speeco Part Number	I.D. Size Inches	O.D. Size Inches	Length Inches	Price Per Piece	Qty. Pkg.
Draw Pin Bushing - Category 1 to 0					
B828	5/8	7/8	1-3/8	\$1.39	4
Draw Pin Bushing - Category 1 to 2					
B821	7/8	1-1/8	1-3/4	1.44	4
AB1-2*	7/8	1-1/8	1-3/4	1.98	4
Draw Pin Bushing - Category 2 to 3					
B832	1-1/8	1-7/16	1-3/4	1.82	4
B8312#	1-1/8	1-7/16	2-1/2	3.94	4
Top Link Bushing - Category 0 to 1					
B829	5/8	3/4	1-5/8	1.39	4
Top Link Bushing - Category 1 to 2					
B831	3/4	1	1-15/16	1.44	4
Top Link Bushing - Category 2 to 3					
B833	1	1-1/4	1-3/4	1.88	4

*Miller # With 15/32 Lynch Pin Hole

STABILIZER STUB PINS -

Di-Chromate Plated

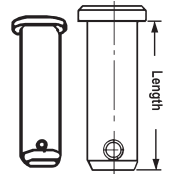
Speeco Part Number	Pin Diam. Inches	Thread Diam. Inches	Length Overall Inches	Useable Length Inches	Price Per Piece	Pkg. Qty.
P781	7/8	5/8	2-5/8	3/8	\$2.48	4
P711	7/8 Long	7/8	3-1/4	1/2	4.11	4



CATEGORY III CLEVIS DRAW PIN -

Di-Chromate Plated, Drilled for 7/16" Lynch Pin.

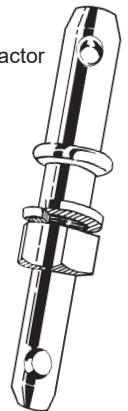
Part Number	Pin Diam. Inches	Wt. Lbs.	Length Overall Inches	Useable Length Inches	Price Per Piece	Pkg. Qty.
P7230	1-7/16	3	6	4-1/2	\$11.94	4
P7231	1-7/16	3-1/2	7-3/4	6-1/4	13.09	4



DUAL CATEGORY DRAW PINS - Plated

Allows use of same implement with two categories of tractor without changing pin. Nut and lock washer included.

Part Number	Pin Diam. Inches	Wt. Lbs.	Thread Diam. Inches	Length Overall Inches	Price Per Piece	Pkg. Qty.
Category 1 & 2						
P7249	7/8 & 1-1/8	2	1	8	\$12.35	4



TRACTOR CATEGORY DEFINITIONS

(Per ASAE Standards)

	Tractor Horsepower	Linkage Dimensions	
		Top Link Pin	Lift Arm Pin
Category 0	Up to 20	5/8	5/8
Category 1	20 to 45	3/4	7/8
Category 2	40 to 100	1	1-1/8
Category 3	80 and over	1-1/4	1-7/16

Prices subject to change without notice. **ASK FOR QUANTITY DISCOUNT**

1-800-228-9222 / e-mail: sales@baumhydraulics.com
Fax: 1-800-832-2522 / www.baumhydraulics.com / © Baum Hydraulics Corporation

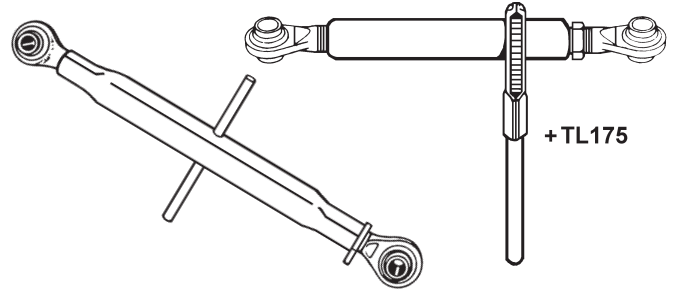
BAUM HYDRAULICS CORPORATION

TOP LINKS, PINS, CYLINDERS & DRAWBARS

TOP LINKS -

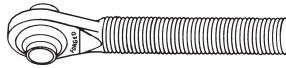
Speeco Part Number	For Pin Size Inches	For Ball Socket Size Inches	Category No.	Collapsed Length Inches	Extended Length Inches	Thread Size Inches	Price Per Piece
TL197	5/8	5/8	0	13	18	3/4	\$32.86
TL165P Hvy.*	3/4	3/4	1	21	31	1-1/8	34.14
TL173P Hvy.	1	1	2	23	32	1-1/4	69.94
TL174P	1	1	2	21	31	1-1/8	41.60
TL175 Hvy.* +	1	1	2	23	32	1-1/4	97.55
TL187 Hvy.	1-1/4	1-1/4	3	25.5	37	1-3/8	160.86

* With Thread Lock. + Ratchet Handle Only



TOP LINK REPAIR ENDS -

LH in Part Number indicates Left Hand Thread
RH in Part Number indicates Right Hand Thread



Speeco Part Number	Pinhole Size Inches	Category No.	Type	Fits	Thread Size Inches	Price Per Piece
RE1619 LH	3/4	1	Forged	TL165	1-1/8	\$20.81
RE1620 RH	3/4	1	Forged	TL165	1-1/8	20.81
RE1212 LH	1	2	Welded	TL127	1-1/4	39.53
RE1717 LH	1	2	Forged	TL173	1-1/4	31.72
RE1718 RH	1	2	Forged	TL173	1-1/4	31.72

TOP LINK CYLINDER -

Category II Only,
1" Swivel Pinhole, 1/2" NPT Ports

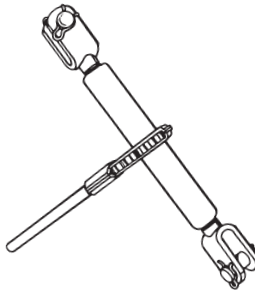


Prince Weld-A-Cylinder Number	Size Inches Bore x Stroke	PSI	Shaft Diam. Inches	Overall Length Retracted Inches	Price Per Piece
BD-0228	3 x 10	3000	1-3/8	20-7/8	\$412.15

SPEECO RATCHET JACK WITH ACME THREAD -

8,000 Lb. Push / 15,000 Lb. Pull. Housing made of Steel Tubing & Yoke & Handle made of steel.
Replace 8" Cylinders 1" Clevis pins & handle included.
Replaces standard hydraulic cylinders & screw jacks.

Part Number	Collapsed Length Inches	Extended Length Inches	Thd. Size Inches	Wt. Lbs.	Price Per Piece
SL1541GL	20	28	1-1/4	14-1/4	\$73.15



POWER TAKE-OFF MILLER LOCK PINS -

Part Number	Pin Diam. Inches	Head Diam. Inches	Useable Length Inches	Wt. Lbs.	Price Per Piece	Pkg. Qty.
516-22LP	5/16	5/8	2-5/8	1/10	\$1.36	4
38-20LP	3/8	5/8	2-1/4	1/10	1.38	4

For 03-34-00037 use 516-22LP



POWER TAKE-OFF MILLER LYNCH PINS -

Part Number	Pin Diam. Inches	Head Diam. Inches	Useable Length Inches	Wt. Lbs.	Price Per Piece	Pkg. Qty.
38-13LP	3/8	5/8	1-1/2	1/10	\$1.24	4
14-16LP	1/4	1/2	1-3/4	1/10	1.36	4



DRAWBARS - All heat treated C1045 steel.



Part Number	Drawbar Size, Inches	Price Per Piece
5/8" Pins and 20" Spacing with Seven 5/8" Holes DB418	5/8x2x20	\$27.34
7/8" Pins and 26" Spacing with Eleven 3/4" Holes DB4115 Reg.	1-1/8x2-1/2x26	55.74
1-1/8" Pins and 26" Spacing with Eleven 3/4" Holes DB421 Reg.	1-1/4x3x26	61.45
1-7/16" Pins and 38" Spacing with Five 1-1/4" Holes DB431 Reg.	1-3/4x3-1/2x38	182.65

TOP LINK PINS -

Di-Chrome Plated



Speeco Part Number	Pin Diam.	Length Overall Inches	Useable Length Inches	Price Per Piece
Category 0				
P776	5/8	4-7/16	3	\$2.07
Category 1				
P771	3/4	4-1/2	2-3/4	2.12
P772	3/4	5-1/2	3-7/8	2.45
P7715	3/4	6-3/8	4-3/4	3.10
Category 2				
P7719	1	4-3/4	3	5.63
TLP4250*	1	6	4-1/4	8.71
P774	1	6	4-3/8	4.71
P7720	1	7-1/16	5-3/8	6.77
Category 3				
P7711	1-1/4	6-1/2	4-5/8	9.79

*Miller

ASK FOR QUANTITY DISCOUNT Prices subject to change without notice.

LYNCH PINS - KLIK PINS

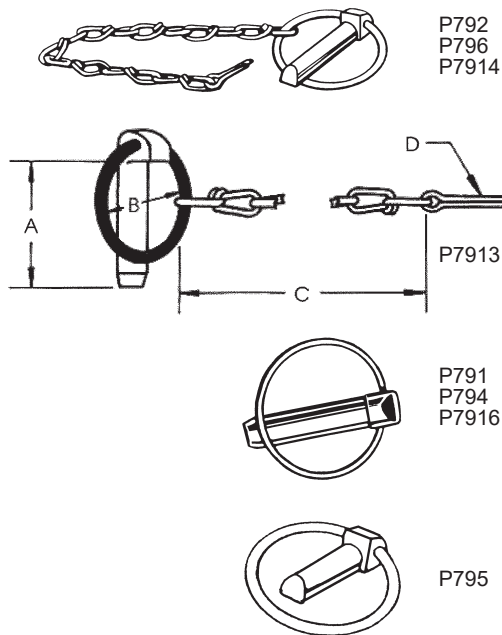
C5

For Three Point Hitches - Full Lock Design.
Fits any hole requiring a lynch pin.



SPEECO LYNCH PINS - Di-chromate plated. Forged Pin complete with snap lock ring. 7/16 x 11/32 pins have one flat side.
Pkg. Qty. = 4 Pieces

WITHOUT CHAIN		WITH CHAIN		A	B	C	D
Without Chain Part Number	Price Per Piece	With Chain Part Number	Price Per Piece	Pin Diam. Inches	Inside Ring Diam. Inches	Shank Length Pin Inches	Overall Length Pin Inches
Standard Long-Shank Pin-Ring Will Not Fit Over End of Pin							
P791	\$0.44	P792	\$1.80	7/16	1-1/4	1-3/4	2-1/8
Black Ring Heavy Duty Long-Shank Pin-Ring Will Not Fit Over End of Pin							
P7913	0.98	P7914	7/16	1-1/2	1-3/4	2-3/16
Safety Lock Long-Shank Pin-Ring Will Not Fit Over End of Pin							
---	---	7/16	--	2	2-7/16
Short Shank Pin-Ring Will Not Fit Over End of Pin							
P795	0.87	P796	1.90	7/16	1-1/4	1-3/8	1-3/4
Long Shank Pin-Ring Will Not Fit Over End of Pin							
P794	0.44	---	1/4	1-1/4	1-3/4	2-1/8
P7916	1.01	---	3/8	1-1/4	1-3/4	2-1/8

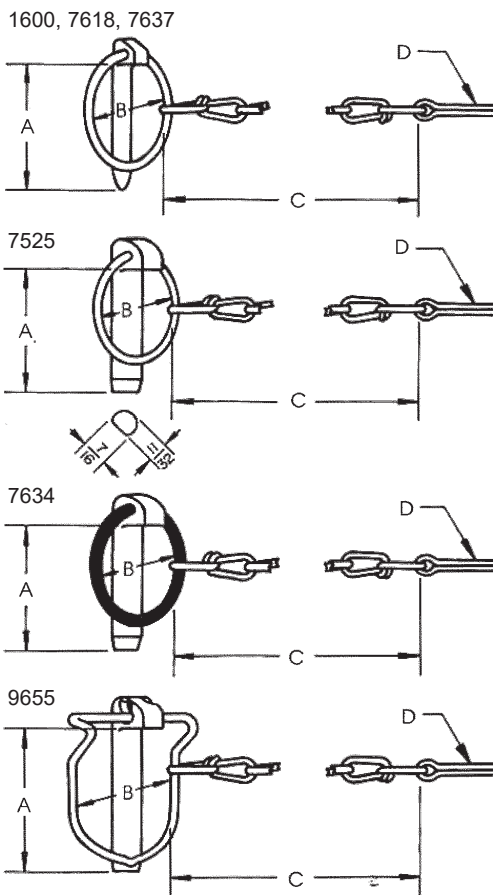


DANUSER®

DANUSER KLIK PINS - Di-chromate plated. Forged Pin complete with snap lock ring. 7/16 x 11/32 pins have one flat side.
Pkg. Qty. = 4 Pieces

WITHOUT CHAIN		WITH CHAIN		A	B	C	D
Without Chain Part Number	Price Per Piece	With Chain Part Number	Price Per Piece	Pin Diam. Inches	Inside Ring Diam. Inches	Shank Length Pin Inches	Overall Length Pin Inches
Standard Long-Shank Pin-Ring Will Not Fit Over End of Pin							
7524	\$2.47	7525	\$....	7/16	1-7/8	2	2-7/16
1533	2.27	---	7/16	1-3/8	1-3/4	2-3/16
Black Ring Heavy Duty Long-Shank Pin-Ring Will Not Fit Over End of Pin							
7631	7634	7/16	1-3/8	1-3/4	2-3/16
7862	2.82	---	7/16	1-5/8	2	2-7/16
Safety Lock Long-Shank Pin-Ring Will Not Fit Over End of Pin							
9656	3.22	9655	7/16	1-3/4	2	2-7/16
Short Shank Pin-Ring Will Not Fit Over End of Pin							
---	---	7/16	--	1-3/8	1-3/4
Long Shank Pin-Ring Will Not Fit Over End of Pin							
7637	0.93	---	3/16	1	1-1/4	1-35/64
1600	0.96	1601	2.07	1/4	1-3/8	1-3/4	2-9/64
7618	1.22	7619	5/16	1-5/8	2-11/32	2-47/64

Picture With Chain Without Chain



Prices subject to change without notice. **ASK FOR QUANTITY DISCOUNT**

1-800-228-9222 / e-mail: sales@baumhydraulics.com
Fax: 1-800-832-2522 / www.baumhydraulics.com / © Baum Hydraulics Corporation

BAUM HYDRAULICS CORPORATION