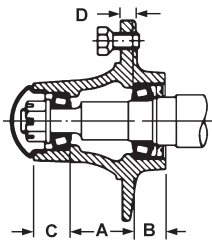


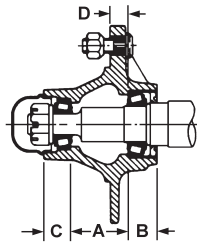
HUBS & SPINDLES FOR FARM IMPLEMENT WHEELS WITH & WITHOUT GREASE FITTINGS

F1

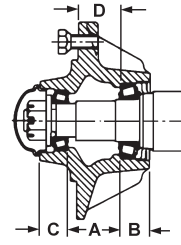
HUBS ONLY - BEST SELLING HUBS STOCKED IN QUANTITY



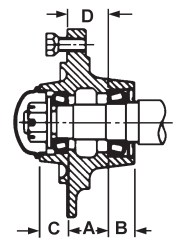
Q669, Q633



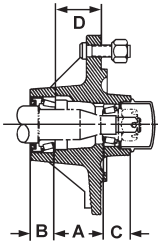
Q736, Q719, 25-5LM



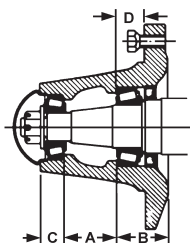
Q826, Q670, Q783,
Q803, 35-6LM



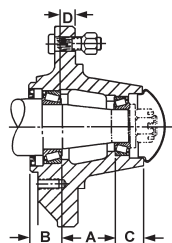
Q709A, Q777, Q888
25-66LM, 45-8LM



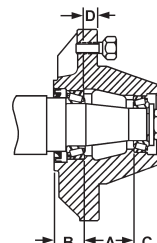
30-66LM



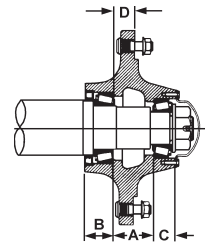
Q821, Q778, Q848



60-8LM



80-8LM



Q881

New Hub Casting Number	Fits Spindle Number	Capacity Lbs.	Hub Only Price Per Piece	Inner Bearing Cone Number	Outer Bearing Cone Number	Oil Seal Number	Grease Cap Number	Wheel Bolt Number	A	B	C	D
4 BOLT ON 5" BOLT CIRCLE, 3-5/8" PILOT												
Q669	0204664	1,250	\$26.63	LM67048	LM11949	14975	1524	90D0613945	1.16	.94	.88	.38
Q633G	0205194	1,500	34.11	LM67048	LM11949	14975	1527	90D0608449	2.00	1.00	1.12	.38
5 BOLT ON 5-1/2" BOLT CIRCLE, 4" PILOT, WITH LIP												
Q736	0205194	1,650	61.84	LM67048	LM11949	14975	1524	0611878	2.00	1.00	.94	.62
25-5LM+	105708K	2,500	43.94	LM48548	LM67048	17617	1604	0611878	1.56	1.03	.94	.19
Q719	0203661	2,760	64.80	LM48548	LM67048	15190	1513	0611878	1.56	1.00	1.06	.22
6 BOLT ON 6" BOLT CIRCLE, 4-5/8" PILOT												
Q826	0205194	1,650	78.70	LM67048	LM11949	14975	1527	90D0613945	2.00	1.00	1.12	1.88
25-66LMG	105708K	2,500	49.81	LM48548	LM67048	17617	1604	0611878	1.56	1.03	.94	1.44
Q709G	0203661	2,760	35.15	LM48548	LM67048	15190	1513	90D0613945	1.56	1.00	1.06	1.59
30-66LM	106753A	3,000	48.12	LM29749	LM67048	17617	1604	LB-506	2.19	1.00	.94	1.94
Q670*	0203161	3,230	78.87	342A	14137A	22870	1526	90D0613945	1.62	1.13	1.75	1.81
Q777 w/zerk	0205470	3,500	60.13	LM29749	LM67048	16289	1513	90D0613945	1.56	1.00	1.06	1.50
35-6LMG+	106169A	3,500	54.73	LM501349	LM67048	20044	1604	90D0608723	2.84	1.44	.97	1.56
Q888	03178551	3,500	30.56	JL69349	LM67048	16284	1513	90D0613945	1.53	1.09	1.03	1.53
Q783G	03155411	4,570	76.06	LM501349	LM67048	18823	1513	90D0613945	2.00	1.13	1.06	1.62
Q803	0205172	4,910	90.27	25590	25877	20148	1607	90D0608723	2.50	1.38	1.13	1.75
8 BOLT ON 8" BOLT CIRCLE, 6" PILOT												
45-8LMG	106272B	4,500	107.18	LM603049	LM67048	22392	1604	90D0608723	2.83	1.26	.94	1.38
Q778 w/zerk	0205172	4,910	106.54	25590	25877	20148	1607	90D0608723	2.50	1.75	1.12	.88
Q821	0205574	5,790	86.50	3780	2790	25091	1607	90D0616460	2.44	2.41	1.25	1.34
60-8LM+	107007A	6,000	93.41	JLM506849	LM501349	27394	1609	0616471	2.56	1.50	1.44	.75
80-8LM+	281316	8,000	235.67	JLM506849	LM501349	27394	1609	90DWD9275	2.72	1.50	1.37	.83
Q848	0317846	8,000	135.05	39581	3585	35062	9301	90D0608723	3.22	1.28	1.40	1.84
10 BOLT ON 13-3/16" CIRCLE, 11.05" PILOT												
Q881	2819000	20,000	682.13	HM218248	HM212049	43771	502041	0617512	3.25	2.28	1.72	1.66

* Inner bearing cone has extended inner race that seal rides on.
+ French & Hecht Style.

Prices subject to change without notice. **ASK FOR QUANTITY DISCOUNT**

1-800-228-9222 / e-mail: sales@baumhydraulics.com
Fax: 1-800-832-2522 / www.baumhydraulics.com / © Baum Hydraulics Corporation

BAUM HYDRAULICS CORPORATION

FARM IMPLEMENT SPINDLES

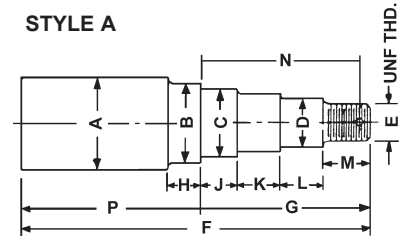
AGRICULTURAL STRAIGHT ROUND SPINDLES FOR FARM IMPLEMENTS FOR 20 MPH SPEED -

Made of round hot rolled steel, ready to be welded into tubing. Interchange with electric wheel and french and hecht.

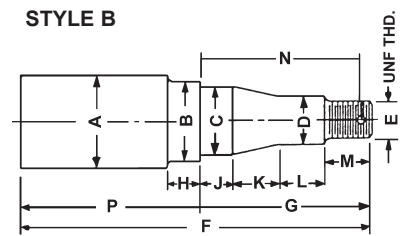
Spindle Number	Capacity Spindle Lbs.	Fits Hub	Price Per Piece	A Bar Stock Size	B Seal Seat Diam.	C Inner Bearing Diam.	D Outer Bearing Diam.	E Thread Diam.	F Overall Length	G Length	M Thread Length
0205194	1,800	Q633	\$18.46	1-5/8	1.50	1.25	.75	3/4	10-3/8	4.10	.94
0203661	2,760	Q736	36.48	1-3/4	1.50	1.375	1.25	7/8	11-1/2	3.90	1.25
		Q826									
		Q719									
105708K+	2,500	Q709	33.72	1-3/4	1.75	1.375	1.25	3/4	12-5/16	3.59	1.25
		Q752									
0205172	4,910	25-56LM Q803	51.86	2-1/8	2.00	1.79	1.375	7/8	15-7/16	5.44	1.25
0204664	1,250	Q669	24.67	1-5/8	1.50	1.25	.75	5/8	10	3.39	.94
0203161	3,230	Q670	43.03	2	2.00	1.625	1.375	7/8	11	4.56	1.28
03178551	3,560	Q888	33.08	1-3/4	1.62	1.496	1.25	7/8	12	3.81	1.25
03155411	4,570	Q783	45.67	2	1.88	1.625	1.25	7/8	12-15/16	4.44	1.25
0205470	3,560	Q777	37.25	1-3/4	1.63	1.50	1.25	7/8	14	3.97	1.25
106753A+	3,000	30-66LM	32.58	1-3/4	1.75	1.50	1.25	3/4	9-7/8	4.62	1.10
106169A+	3,500	35-6LM	36.24	2	2.00	1.625	1.25	3/4	11	5.22	1.10
SA-3000	3,500	QD82-13	21.65	2-1/4	2.25	1.759	1.249	1	9-1/2	4.04	--
0205574	5,790	Q821	107.55	2-3/4	2.50	2.00	1.31	7/8	17-53/64	5.62	1.25
0317846	8,000	Q848	254.04	3-5/8	3.50	2.25	1.625	1-1/4	15-1/2	7.50	1.00
03185741	8,000	Q886	92.00	3-1/8	3.00	2.25	1.37	7/8	16	6.50	--
106272B+	4,500	45-8LM	53.47	2-1/4	2.25	1.78	1.25	3/4	14	5.37	1.06
107007A+	6,000	60-8LM	73.96	2-3/4	2.75	2.16	1.62	1	14	5.50	1.38
281316+	8,000	80-8LM	153.00	3	2.75	2.16	1.62	1	16	6.50	1.38
2819000	20,000	Q881	477.41	4-1/2	4.38	3.54	2.62	2	26-1/2	8.87	--

+ French & Hecht Style, Cold Rolled Steel Spindles.

STYLE A

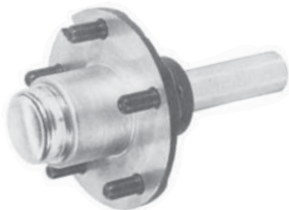


STYLE B



COMPLETE HUB & SPINDLE GROUPS FOR FARM IMPLEMENTS -

Hub Groups Include All Necessary Components For Hub and Spindle Shipped In Bulk



HUBS MAY BE STOCKED WITH OR WITHOUT GREASE FITTINGS

To Order Hubs with Grease Fittings Add G on the end of the Part Number.

Complete Hub Group Number	Price Per Piece
4 BOLT ON 5" BOLT CIRCLE, 3-5/8" PILOT	
Q669	\$76.80
Q633G	85.73
5 BOLT ON 5-1/2" BOLT CIRCLE, 4" PILOT	
Q736	117.19
Q719	107.08
25-5LM	106.64
6 BOLT ON 6" BOLT CIRCLE, 4-5/8" PILOT	
Q826	142.54
Q670	207.79
Q709G	79.63
Q888	110.34
Q777G	143.09

Complete Hub Group Number	Price Per Piece
6 BOLT ON 6" BOLT CIRCLE, 4-5/8" PILOT	
Q783G	\$128.24
Q803	199.65
25-66LM	120.13
30-66LM	116.23
35-6LMG	118.77
8 BOLT ON 8" BOLT CIRCLE, 6" PILOT	
Q778G	220.25
Q821G	326.52
Q848	700.99
45-8LMG	194.59
60-8LMG	255.17
80-8LM	331.46

ASK FOR QUANTITY DISCOUNT Prices subject to change without notice.

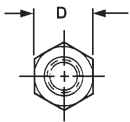
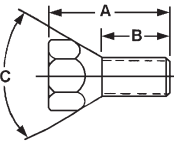
FARM IMPLEMENT PARTS STUD SCREWS, GREASE CAPS, RINGS & WASHERS

F3

FINE CONICAL HEAD WHEEL STUD SCREWS - Pkg. Qty. 20

FINE THREAD

USED WITHOUT NUTS IN TAPPED HUBS



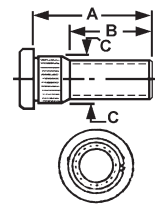
Part Number	Diam. Inches	A Overall Length Inches	B Thread Length Inches	C Head Angle Degrees	D Hex Diam. Inches	Price Per Piece
GRADE 5 - 90° TAPER - FINE THREAD						
90DLB509*	1/2 x	1-3/8	7/8	90°	13/16	\$1.73
90D0608449	1/2 x	1-1/2	1	90°	3/4	0.86
90D0613945	1/2 x	1-3/4	1-1/4	90°	3/4	2.23
90D0617820	1/2 x	2-1/4	1-1/2	90°	3/4	2.40
90DWD91071	1/2 x	2-5/16	1-3/4	90°	3/4	3.26
90DLB569*	9/16 x	1-5/8	1-1/8	90°	7/8	3.95
90D0608723	9/16 x	1-11/16	1-1/8	90°	7/8	2.18
90D0616460	9/16 x	2-1/8	1-1/2	90°	7/8	3.10
90D0617925	9/16 x	2-5/8	2	90°	7/8	2.52
90DWD9275	5/8 x	2-3/8	1-3/4	90°	15/16	3.26
90DWD9731	5/8 x	3-5/8	3	90°	15/16	7.35
GRADE 8 - 90° TAPER - FINE THREAD						
90D0618025	5/8 x	2-3/4	1-7/8	90°	15/16	3.56
GRADE 5 - 60° TAPER - FINE THREAD						
LB-506	1/2 x	1-1/2	7/8	60°	13/16	1.73

NOTE: DWD Used with some dual wheels
*90DLB509 & 90DLB569 Phosphate Oil Treated, All Others are Plated

FINE SPLINED FLAT HEAD WHEEL STUD SCREWS - Pkg. Qty. 20

FINE THREAD - GRADE 5

USED WITH CONICAL NUTS IN DRILLED HUBS

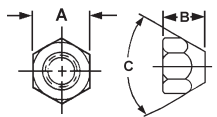


Part Number	Diam. Inches	A Overall Length Inches	B Thread Length Inches	C Spline Diam. Inches	Price Per Piece
GRADE 5					
0613717	1/2 x	2-1/16	1-1/2	.612	\$0.72
ST-502-04	1/2 x	2	1-3/8	.543	1.31
ST-504 *	1/2 x	2-1/4	1-3/8	.606	1.51
ST-562	9/16 x	2-1/8	1-3/8	.606	2.59
0612730	9/16 x	2-1/8	1-3/8	.617	2.42
ST-625	5/8 x	2-1/2	1-3/8	.682	3.21
953033 *	3/4 x	2-13/16	1-13/16	1.00	6.12
91036DWD +	7/8 x	3-1/2	2-3/4	1.00	13.60

*ST-504 and 953033 are Grade 8 + Coarse Thread

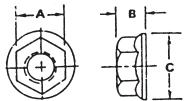
FINE CONICAL NUTS TO FIT FINE SPLINED FLAT HEAD WHEEL STUD SCREWS - Pkg. Qty. 20

GRADE 5



Part Number	Thread Size	A	B	C	Price Per Piece
0611878	1/2-20	13/16	5/8	90	\$0.91
STN-569	9/16-18	1	11/16	90	1.63
0616471	5/8-18	15/16	23/32	90	0.79
912935	3/4-16	1-1/2	7/8	100	3.60

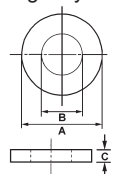
FLANGE NUTS - GRADE 5 - Pkg. Qty. 20



Part Number	Thread Size	A	B	C	Price Per Piece
0617512	3/4-16	1-1/8	21/32	1-1/2	\$2.07

AG SPINDLE WASHERS FOR HUBS - TYPE 3 - PLAIN FINISH -

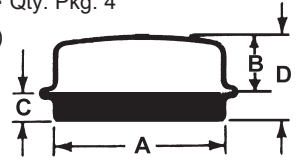
Pkg. Qty. 20



Part Number	A O.D.	B I.D.	C Width	Price Per Piece
SW-625	1.312	.668	.095	\$0.67
SW-750	1.750	.820	.187	1.53
SW-751	1.500	.795	.125	0.81
SW-875	2.000	.950	.164	1.60
SW-1001	2.140	1.070	.250	3.46

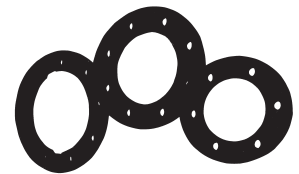
GREASE CAPS - Qty. Pkg. 4

A-Flange Diam. (O.D.)
B-Crown Height
C-Flange Length
D-Overall Height



Part Number	Material Thickness	A Flange Diam.	B Crown Height	C Flange Length	D Overall Height	Price Per Piece
1503	.032	1.785	1.16	.375	1.53	\$1.72
1524	.032	1.943	1.10	.281	1.38	1.87
1527	.037	1.957	1.04	.340	1.38	3.23
9099	.063	1.969	.625	.438	1.062	4.38
1505	.032	1.986	.78	.375	1.16	1.39
1601	.059	2.331	.81	.440	1.25	2.40
1520	.032	2.448	1.03	.312	1.34	1.66
1604	.059	2.448	.88	.281	1.16	3.82
1606	.059	2.503	.56	.312	.94
1605	.059	2.717	1.03	.312	1.34	6.61
1526	.037	2.720	1.13	.312	1.44	2.31
1609	.059	3.125	1.03	.281	1.31	7.70
1607	.059	3.155	1.19	.187	1.38	3.17
1528	.037	3.355	1.06	.560	1.62	4.77
9301	.070	3.950	2.13	.310	2.44	18.87

WHEEL REINFORCING RINGS - FOR BOTH FORMED WHEELS & FLAT WHEELS



Part Number	No. Of Bolt Holes	Bolt Circle Inches	Pilot Diam Inches	Ring Outside Diameter	Plate Thickness Inches	Price Per Piece
60E19 - Fits bolt sizes: 1/2 & 9/16 inches	6 x	6 x	4-5/8	8	1/4	\$40.81
80E19 - Fits bolt sizes: 9/16 & 5/8 inches	8 x	8 x	6	10-1/4	5/16	48.97
81E19 - Fits bolt sizes: 9/16 & 5/8 inches	9 x	9-1/2 x	7-3/4	11-3/4	5/16	81.61
91E19 - Fits bolt size: 7/8 inches	10 x	13-3/16 x	11-1/16	16	3/8	122.42

WHEEL REPAIR WASHERS -

Used for repairing and reinforcing wheel studs by welding them over the worn and enlarged holes. Can be used on farm wagons, etc. with 1/2" & 9/16" studs. Heavy gauge steel slightly convex with bevel edge.

Pkg. Qty. 50 per box

Part Number	Price Per 100
Wheel Repair	\$60.89



Prices subject to change without notice. **ASK FOR QUANTITY DISCOUNT**

1-800-228-9222 / e-mail: sales@baumhydraulics.com
Fax: 1-800-832-2522 / www.baumhydraulics.com / © Baum Hydraulics Corporation

BAUM HYDRAULICS CORPORATION